

WHAT EXCITEMENT! THE ANCIENT EGYPTIAN TEMPLE OF KAMAN IS DRAWING RECORD CROWDS TO THE GRANDVILLE MUSEUM. AMONG THE CURIOUS ARE RICH AND JAMIE HORNE, NEWLYWEDS, WHO ARE ABOUT TO SOLVE FIRSTHAND THE MYSTERY OF THE TEMPLE WALL--OR WHAT WE CALL ...

# EGYPTIAN GRAFFITI

TEXT: JANE & BOB STINE  
ART: SRASSETTE

PLEASE FOLLOW ME CLOSELY. THE TEMPLE IS LIKE A MAZE. IF YOU GET LOST, YOU COULD WANDER FOR HOURS!

RICH, CAN YOU IMAGINE! THIS TEMPLE IS 4,000 YEARS OLD! AND THEY BROUGHT IT FROM EGYPT BRICK BY BRICK!

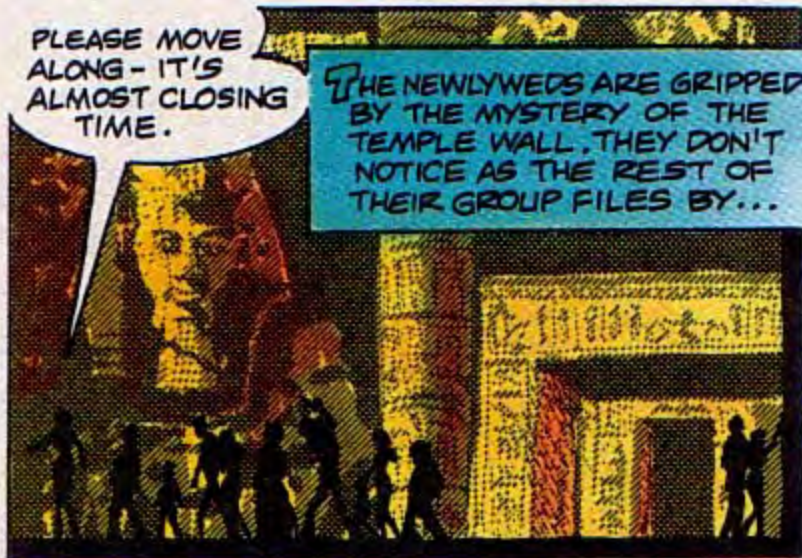
THIS WALL IS THE MOST MYSTERIOUS AND FAMOUS FEATURE OF THE TEMPLE.

LOOK--THE CLOTHES ON THE FIGURES! THEY SEEM SO MODERN!

EXACTLY! THAT'S THE MYSTERY!

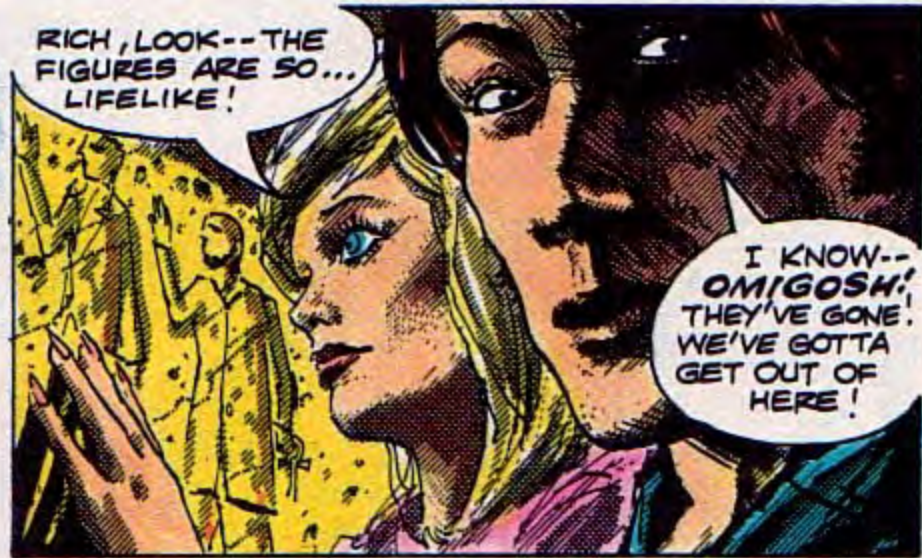
NO ONE CAN EXPLAIN HOW THIS 4,000-YEAR-OLD MURAL COULD INCLUDE FIGURES WEARING 19TH CENTURY CLOTHES!

PRODUCED BY  
THE JOE  
RUBERT SCHOOL  
OF CARTOON AND  
GRAPHIC ART, INC.



PLEASE MOVE ALONG - IT'S ALMOST CLOSING TIME.

THE NEWLYWEDS ARE GRIPPED BY THE MYSTERY OF THE TEMPLE WALL. THEY DON'T NOTICE AS THE REST OF THEIR GROUP FILES BY...



RICH, LOOK--THE FIGURES ARE SO... LIFELIKE!

I KNOW--OMIGOSH! THEY'VE GONE! WE'VE GOTTA GET OUT OF HERE!



THE YOUNG COUPLE'S PANIC MOUNTS AS THEY HURRY THROUGH DARKENED ROOM AFTER DARKENED ROOM, UNABLE TO FIND AN EXIT...

WHAT WAS THAT? I HEARD A CREAKING SOUND!

GULP!

GREEEEEEEEK



LOOK--WE'VE MADE A CIRCLE! WE'RE BACK IN THE MURAL ROOM!

OH! LOOK!!

HHHSSSS

**T**ERRIFIED BY THE APPROACH OF THE ROTTING RELIC, RICK PICKS UP AN ANCIENT STAFF TO USE AS A WEAPON ...



**O**NE TOUCH FROM THE MUMMY AND THE SOLID GOLD STAFF DISINTEGRATES AND IS NO MORE ...

**T**RAPPED IN THE ANCIENT SANCTUM, RICH AND JAMIE HAVE NO CHANCE FOR ESCAPE FROM THE MUMMY'S WRATH ...

OH, NO!  
HELP!  
HELP!



**T**HE NEXT MORNING THE GUIDED TOURS CONTINUE ...

THIS WALL IS THE MOST MYSTERIOUS AND FAMOUS FEATURE OF THE TEMPLE.

**T**HE CROWD MOVES THROUGH THE EERIE CHAMBER ...

**A**ND NO ONE NOTICES TWO NEW FIGURES ON THE WALL ... A YOUNG COUPLE WHO SOLVED THE TEMPLE MYSTERY BY BECOMING PART OF IT!

THE END

